

# ROCK RIVER WALKWAY WATERTOWN, WI PRELIMINARY



ROCK RIVER WALKWAY  
WATERTOWN, WI



TITLE SHEET

G-1

## UTILITY CONTACTS

**GAS**  
WE ENERGIES  
500 SOUTH 118TH STREET - WAOC  
ATTN: MARYANN WILSON  
OFFICE: 414-944-5848  
EMAIL: MATTHEW.FEHLER@WE-ENERGIES.COM

## ELECTRIC

WE ENERGIES  
500 SOUTH 118TH STREET - WAOC  
ATTN: MARYANN WILSON  
OFFICE: 414-944-5765  
EMAIL: ERICH.WESTENHAGEN@WE-ENERGIES.COM

## CABLE & INTERNET

COMCAST  
10000 WISCONSIN DR  
JUNEAU, WI 54908  
ATTN: RONALD FRASE  
PHONE: 715-735-4444  
EMAIL: RONALD.FRASE@COMCAST.COM

## TELEPHONE

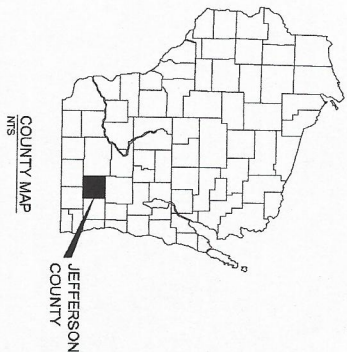
AT&T  
2005 REVAULDER ROAD  
WALKESHA, WI 53188  
ATTN: ALPER KOLOU  
PHONE: 262-781-1111  
EMAIL: ALPER.KO@ATT.COM

## WATER & WASTEWATER

CITY OF WATERTOWN  
800 HOPMANN DRIVE  
WATERTOWN, WI 53094  
ATTN: KENYA FREBERG  
EMAIL: KENYA.FREBERG@CITYOFWATERTOWN.WI.US

## DIGGERS HOTLINE

1-800-542-8811 OR 811  
DIGGERS HOTLINE  
1-800-542-8811  
www.diggershotline.com



## SHEET INDEX

SHEET NO	SHEET TITLE
G-1	TITLE SHEET
G-2	LEGEND
G-3	GENERAL PROJECT AND EROSION CONTROL NOTES
G-4	PROJECT OVERVIEW
T-1	PROPOSED TYPICAL SECTIONS
T-2	RETAINING WALL TYPICAL SECTIONS
EC-1	EROSION CONTROL NOTES
EC-2	NE EROSION CONTROL PLAN
EC-3	SE EROSION CONTROL PLAN
EC-4	NW EROSION CONTROL PLAN
PP-1	NE PLAN AND PROFILE
PP-2	NE PLAN AND PROFILE
PP-3	SE PLAN AND PROFILE
PP-4	NW PLAN AND PROFILE
PP-5	NW PLAN AND PROFILE
XS-1	NE CROSS SECTIONS
XS-2	NE CROSS SECTIONS
XS-3	NE CROSS SECTIONS
XS-4	NE WALL CROSS SECTIONS
XS-5	SE CROSS SECTIONS
XS-6	SE CROSS SECTIONS
XS-7	SE CROSS SECTIONS
XS-8	NW CROSS SECTIONS
XS-9	NW CROSS SECTIONS
XS-10	NW CROSS SECTIONS
XS-11	NW CROSS SECTIONS

NO	DATE	REVISION

NO	DATE	REVISION

NO	DATE	REVISION

NO	DATE	REVISION

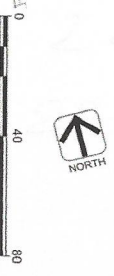
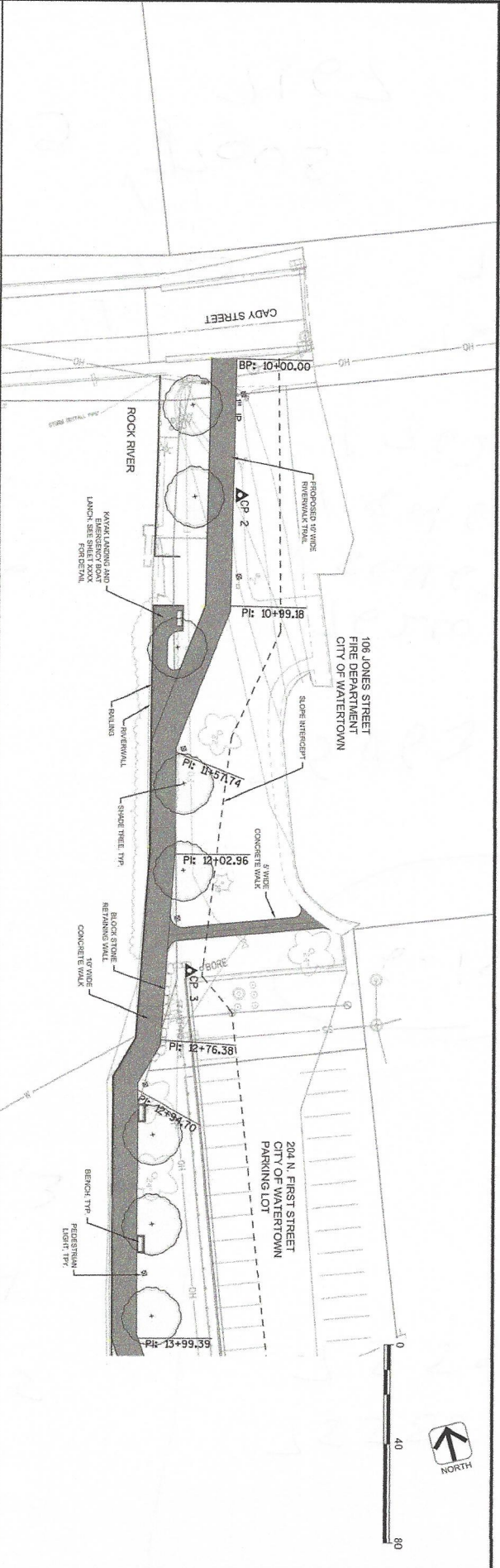
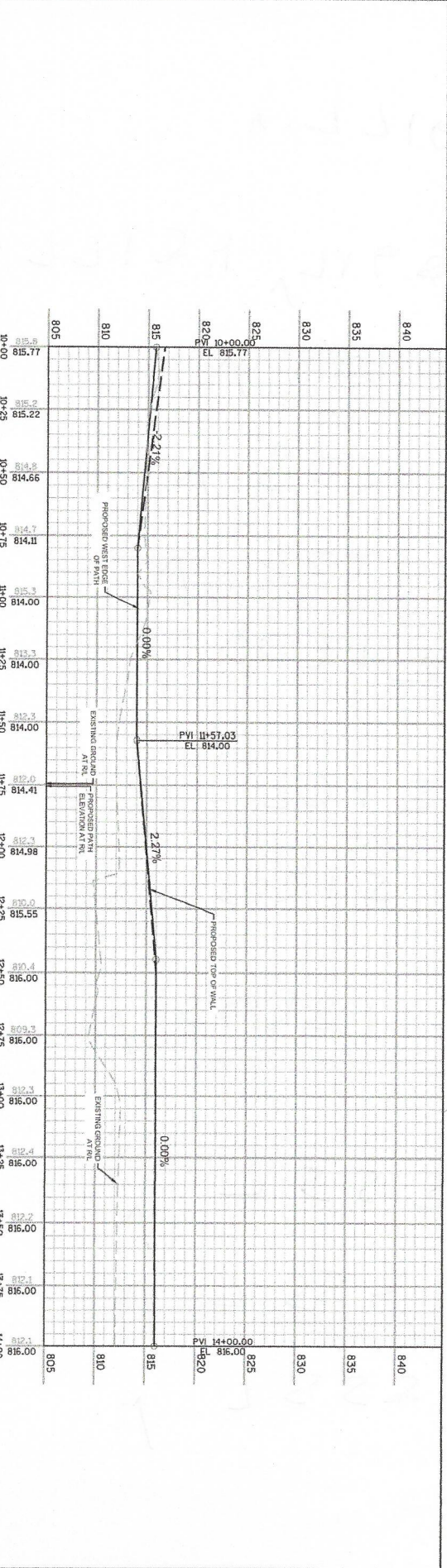
DATE	BY	CHK BY	REVISION
24-0294-01	DESIGN		
	DATE	NO.	DESCRIPTION

DATE	BY	CHK BY	REVISION

**AVRES ASSOCIATES**  
 WATERTOWN, WI

**NE PLAN AND PROFILE**

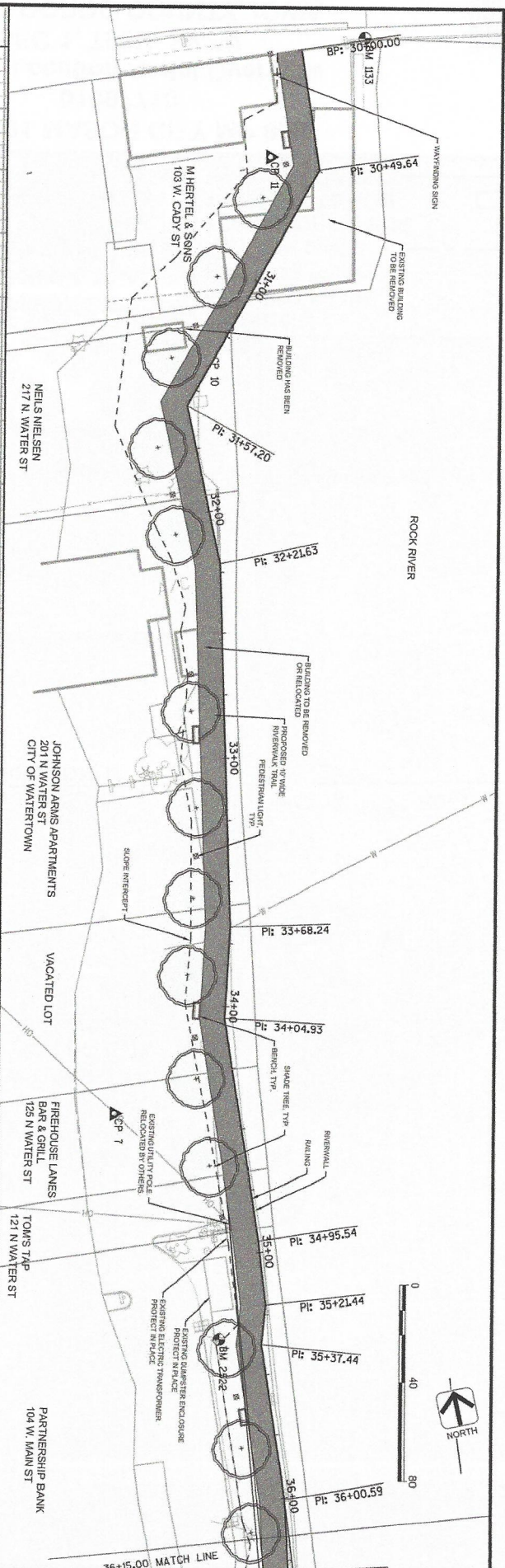
PP-1







STATION	ELEVATION	REMARKS
830		
825		
820		
815		
810		
805		
800		
795		
30+00	816.00	
30+25	815.63	
30+50	814.72	
30+75	813.82	
31+00	812.91	
31+25	809.2	
31+50	812.00	
31+75	812.00	
32+00	812.00	
32+25	810.6	
32+50	809.9	
32+75	809.8	
33+00	809.7	
33+25	809.6	
33+50	809.9	
33+75	809.7	
34+00	810.6	
34+25	810.7	
34+50	813.00	
34+75	813.50	
35+00	814.00	
35+25	814.09	
35+50	810.2	
35+75	810.7	
36+00	814.36	

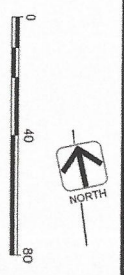


ROCK RIVER WALKWAY  
 WATERTOWN, WI

AVRES  
 ASSOCIATES  
 WATERTOWN, WI

NW PLAN AND PROFILE

PP-4





NO.	REVISION	DATE	BY	CHKD	REVISION	NO.	DATE	BY	CHKD
1									
2									
3									
4									
5									
6									
7									
8									
9									
10									
11									
12									
13									
14									
15									
16									
17									
18									
19									
20									
21									
22									
23									
24									
25									

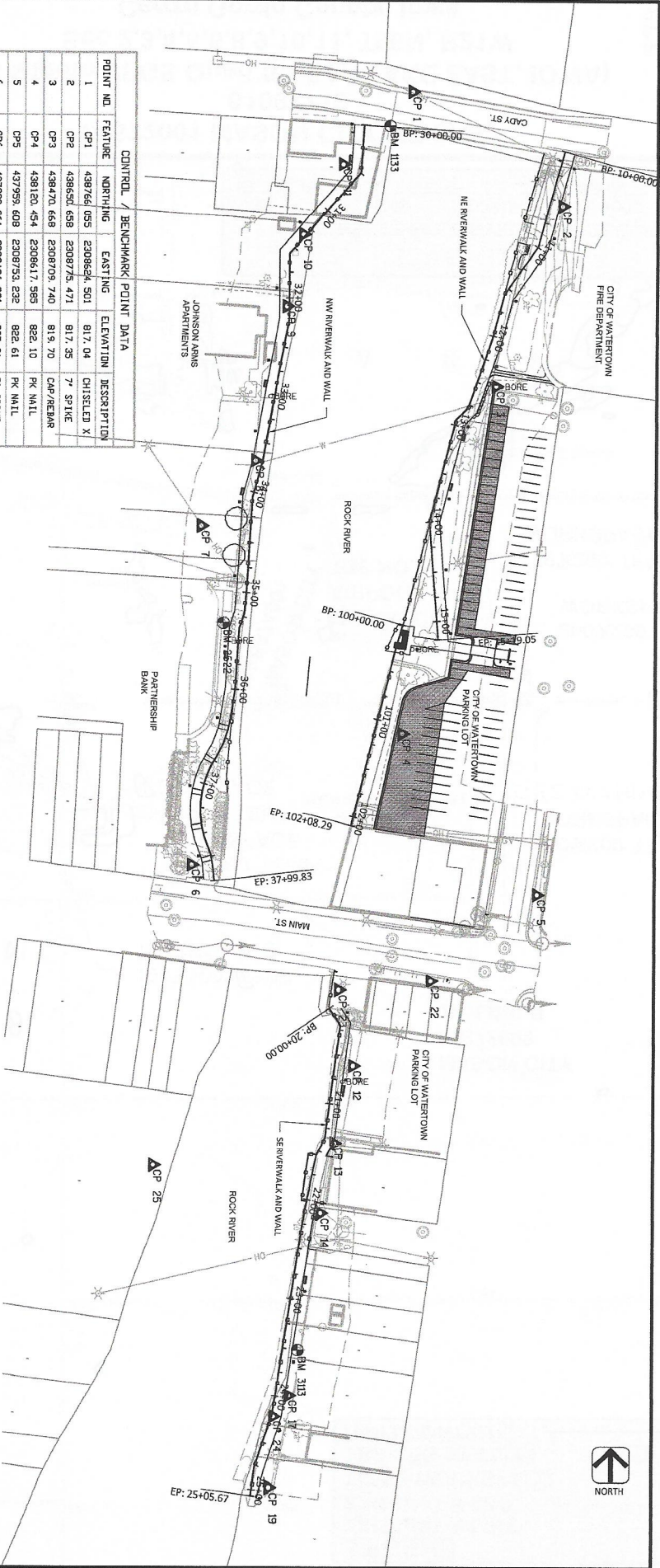
NO.	REVISION	DATE	BY	CHKD
1				
2				
3				
4				
5				
6				
7				
8				
9				
10				
11				
12				
13				
14				
15				
16				
17				
18				
19				
20				
21				
22				
23				
24				
25				

NO.	REVISION	DATE	BY	CHKD
1				
2				
3				
4				
5				
6				
7				
8				
9				
10				
11				
12				
13				
14				
15				
16				
17				
18				
19				
20				
21				
22				
23				
24				
25				

NO.	REVISION	DATE	BY	CHKD
1				
2				
3				
4				
5				
6				
7				
8				
9				
10				
11				
12				
13				
14				
15				
16				
17				
18				
19				
20				
21				
22				
23				
24				
25				

CONTROL / BENCHMARK POINT DATA				
POINT NO.	FEATURE	NORTHING	EASTING	ELEVATION DESCRIPTION
1	CP1	439764.055	2308624.501	817.04 CHISELED X
2	CP2	439650.638	2308775.471	817.35 7' SPIKE
3	CP3	438470.668	2308709.740	819.70 CP/REBAR
4	CP4	438120.454	2308617.985	822.10 PK NAIL
5	CP5	437959.608	2308753.232	822.61 PK NAIL
6	CP6	437988.961	2308406.981	825.31 7' SPIKE
7	CP7	438330.132	2308414.917	813.63 7' SPIKE
8	CP8	438395.047	2308468.785	811.63 7' SPIKE
9	CP9	438951.462	2308199.352	811.19 7' SPIKE
10	CP10	438622.040	2308915.743	809.79 7' SPIKE
11	CP11	438692.608	2308955.072	811.96 7' SPIKE
12	CP12	437787.162	2308669.657	817.84 PK NAIL
13	CP13	437708.115	2308951.223	811.93 7' SPIKE
14	CP14	437628.355	2308537.743	812.76 PK NAIL
17	CP17	437455.183	2308506.638	818.43 7' SPIKE
19	CP19	437359.892	2308486.997	815.96 7' SPIKE
22	CP22	437872.220	2308646.989	821.76 PK NAIL
23	CP23	437863.166	2308554.786	821.60 TEMP BLACK X
24	CP24	437433.875	2308491.279	819.42 TEMP BLACK X
25	CP25	437655.491	2308369.407	817.32 PK NAIL

CONTROL / BENCHMARK POINT DATA				
POINT NO.	FEATURE	NORTHING	EASTING	ELEVATION DESCRIPTION
1133	BM100 NGS	438731.971	2308601.922	816.91 BRASS DISK 2.56
6522	BM101	438232.652	2308437.423	816.94 SW CORNER PALE BASE
3113	BM102	437901.662	2308515.578	819.89 CHISELED SQUARE



ROCK RIVER WALKWAY  
WATERTOWN, WI



PROJECT OVERVIEW

G-4

*[Faint handwritten notes and bleed-through from the reverse side of the page, including words like "Site", "County", "Town", and "Refine Search"]*

155 sites found where:  
 County = Dane  
 Town = Madison  
 Refine Search

Home Search Guides

Wisconsin Archaeological Site Inventory  
 State Historic Preservation Office

WISCONSIN HISTORICAL SOCIETY

Recent Sites

Search